

BERTHOLD ELECTRIC GENERATOR CONNECTION CABINET



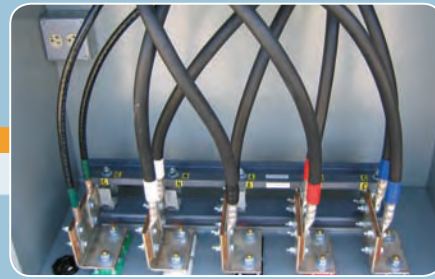
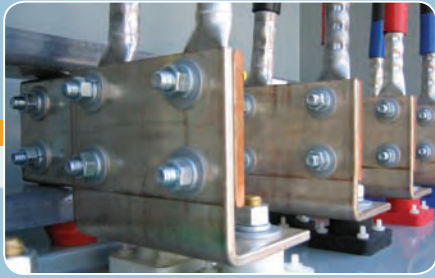


Berthold Electric Company's Generator Connection Cabinet provides a quick and convenient station to connect a portable generator to a facility's main service entrance equipment. Whether during a long-term utility outage or planned facility maintenance, our cabinet will help you easily establish a connection to back-up power when time is of the utmost importance.



Berthold Electric

www.GenConCab.com | 800.657.6650



Constructed of rugged, corrosion-resistant Aluminum or Stainless Steel, the Berthold Electric Generator Connection Cabinet can be ordered in either a wall mount or pad mount design. The cabinet is designed to maintain a NEMA 3R rating, even with the portable generator cables connected, with the standard bolted construction. For applications requiring an even higher degree of weather protection and strength, cabinets can be continuously seam welded. Doors are attached with a continuous hinge, incorporate stiffeners, and are held closed with weather resistant latches. On both cabinet designs, the generator cable connection access panel is held in place by the main door so that the connection point can only be accessed if the main door is unlocked and opened by a qualified technician. Wall mount cabinets have external mounting ears for easy installation; Pad mount cabinets are supported on an aluminum channel base, providing a location for anchoring the cabinet to the concrete pad.

The cabinet interior is constructed with silver-plated copper bus, rated at 1000A/square inch current density, with ample cable bending space provided for permanent connections. The bus is mounted on insulators that are securely fastened to the enclosure walls. Generator connections are typically made with factory installed Crouse-Hinds color-coded E1016 series Cam-Lok connectors or mechanical set screw lugs. Permanent connection cables to the facility's service equipment are secured with long barrel crimp lugs or mechanical set screw lugs.

ELECTRICAL FEATURES:

- Sizes from 400 to 3200 Amps.
- Available System Voltage rating up to 600 Volts.
- Mechanical Set Screw Lugs, Long Barrel Compression Lugs, or Punching only available for Permanent Connections.
- Mechanical Set Screw Lugs or Crouse Hinds E1016 Series color coded Cam-Lok Connectors available for Generator Connections.
- Silver-plated copper bus rated at 1000A per square inch current density.

MECHANICAL FEATURES:

- Wall mount or pad mount design.
- NEMA 3R Aluminum or Stainless Steel Construction.
- Lockable Latch for front door.
- Access Panel for Portable Generator/Load Bank connection held closed by door when not in use.
- Drip Hood.



Berthold Electric

www.GenConCab.com | 800.657.6650

AVAILABLE OPTIONS

- **Convenience outlet provision:**

The cabinets can be provided with outlet boxes for wiring in up to four-gang outlets. These outlet boxes would typically be energized by the preferred or utility source to provide a convenient location to plug in drop lights, tools, or the portable engine block heater and battery charger.

- **Access panel interlocking micro-switches:**

When the switch is wired to the shunt trip on the permanent engine breaker or the utility service main breaker, it serves to prevent asynchronous connection of the two sources.

Shunt tripping the preferred source prevents the generator connection cabinet from being back-fed, thus ensuring the cabinet is de-energized when personnel are making connections.

- **Key interlock provision:**

Prevents access to portable engine connection compartment unless key is present. Key is held captive when door is open.

Provision Only: Customer to supply and install Kirk Key Interlock Model #KDLO---1E or Superior Interlock Model #B-5003-1.

- **Phase Sequence and Failure Indication**

Phase Sequence and Failure Indication can be provided to ensure that the temporary engine is connected with the same phasing as the utility source.

Indication is provided by a Crompton Phase Sequence and Failure Meter.

- **Cam-Lok Snap Covers**

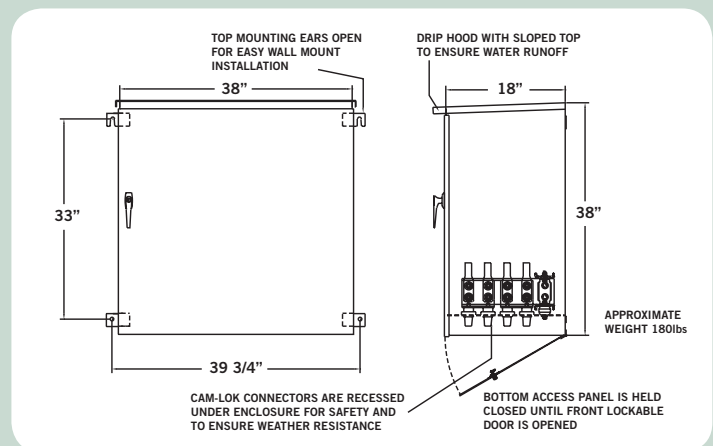
Cam-Lok generator connection points can be covered with a spring-closed metal cover for added safety.

- **Cam-Lok Black Rubber Caps**

Cam-Lok generator connection points can be covered with a weather resistant rubber cap for added protection and safety when all connection points are not in use.



WALL MOUNT



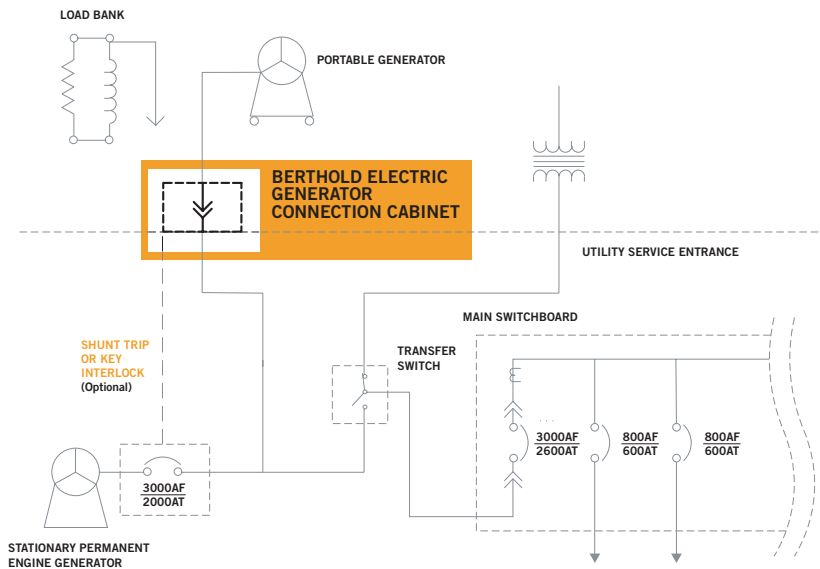
- **Welded Construction**

Either cabinet style can be fabricated using continuously seam welded construction for increased durability and weather resistance. All welds are finished and ground smooth. Choose this option for a NEMA 4X style construction.

- **Cabinet Finish**

All cabinets come with standard Bare Aluminum Finish. Optional Finishes include Powder Coated Gray or Stainless Steel for added durability.





APPLICATION NOTES

The Berthold Electric Generator Connection Cabinet can be used in several supply or load power configurations. Highlighted in this diagram is the Generator Connection Cabinet ready to be fed from the portable generator if temporary back-up power is needed while the permanent generator is out of service.

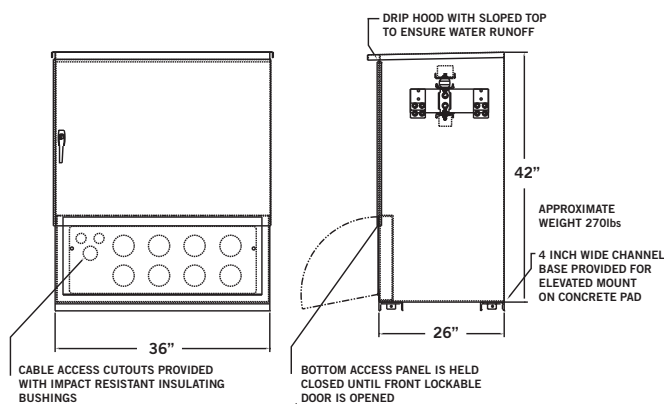
Additional applications can include using a portable generator as the sole auxiliary source connected through our cabinet to feed a transfer switch or back-feed a circuit breaker on service equipment.

The Berthold Electric Generator Connection Cabinet also can act as a convenient point to attach load banks for routine generator runs.

See www.GenConCab.com for application configurations.



PAD MOUNT



GENERATOR CONNECTION CABINETS SUGGESTED SPECIFICATIONS

- Enclosure shall be provided with SouthCo lockable latches on front door, and an independent access panel door. Access panel shall not open unless main lockable door has been opened.
- Internal bus shall be sized for 1000A/sq. in. ampacity, and bus work shall be supported with UL Recognized Component (QEUY2) insulators.
- Enclosures shall be either stand alone pad mount or wall mount NEMA 3R Aluminum or Stainless Steel construction. Pad mount enclosures shall be provided with a channel base, and wall mount enclosures shall have external mounting ears.
- Generator connection cabinets shall be manufactured by Berthold Electric Company of Chicago, Illinois.



Berthold Electric

www.GenConCab.com | 800.657.6650

TO ORDER A BERTHOLD ELECTRIC GENERATOR CONNECTION CABINET COMPLETE THE FOLLOWING CATALOG NUMBER

Mounting Style	Rated Continuous Current	System Voltage	Permanent BUS Connections	Generator Connections	Options
W Wall Mount	04 400 Amperes	1 120/240V 1ph. 3W	S Mechanical Set Screw Lugs	S Mechanical Set Screw Lugs	Leave blank for no options. See the table of options and the code number for each option required.
P Pad Mount	08 800 Amperes	2 120/240V 3ph. 4W	C Long Barrel Compression Lugs	F Female E1016 Series Cam-Loks	
	12 1200 Amperes	3 208/120V 3ph. 4W	P NEMA Two Hole Punching Only	M Male E1016 Series Cam-Loks	
	16 1600 Amperes	4 480V 3ph. 3W			
	20 2000 Amperes	5 480/277V 3ph. 4W			
	24 2400 Amperes				
	28 2800 Amperes				
	32 3200 Amperes				
			See cable termination table to verify the standard number and size of lugs		

Note: Berthold Electric can also provide generator cables and connectors. Contact us for more information.

Cable Termination Table

Permanent Feeder Connections – Mechanical Lugs	
Current Range	Cable Range
400A-1200A	4-2AWG to 600 MCM set screw lug positions
1600A-2000A	6-2AWG to 600 MCM set screw lug positions
2000A-3200A	8-2AWG to 600 MCM set screw lug positions

Permanent Feeder Connections – Compression Lugs

Specify quantity and size of lugs or NEMA 2 hole punching.

Generator Connections

Mechanical Lugs – See table above

Cam-Loks – Quantity provided based on 400A per connector.

Table of Options and Option Code Numbers

Available Options	Option Code
Access panel interlocking micro-switches	1
Key interlock provision—provision only. Customer to supply and install Kirk Key Interlock Model #KDLO --- 1E or Superior Interlock Model #B-5003-1	2
Phase Sequence and Failure Indication	3
Convenience Outlet Provision	5
Cam-Lok Snap Covers	6
Cam-Lok Black Rubber Caps	7
Welded Construction for Wall Mount	8W
Welded Construction for Pad Mount	8P
Powder Coat Gray Finish	9
Stainless Steel Construction	10
Select the options required and list the option codes in the suffix of the catalog number	

Example: The catalog number for a wall mount 1200A, 480V, 3-phase, 3 wire generator connection cabinet with permanent connections made by long barrel crimp lugs and generator connections made by male cam-Loks with no options is W12-4C-M. Specify quantity and size of lugs. (Example: 2-500 MCM per Phase and Neutral, 1-3/0 Ground.)



BERTHOLD ELECTRIC

1900 West Carroll Avenue
Chicago, Illinois 60612

800.657.6650
312.243.5767

info@GenConCab.com
www.GenConCab.com

Major credit cards accepted.

Berthold Electric also manufactures a wide variety of custom and made-to-order electrical power distribution equipment. Please visit our website for more information.

www.bertholdelectric.com